

20 Gouldsbury Street MOSMAN, NSW



Charming contemporary home in a coveted setting

Architecturally designed blends period features with contemporary finishes, this three bedroom semi sits in the heart of Mosman, with Mosman village shops and cafes, Allan Border Oval, schools and transports just mere moments away. Light filled home with soaring ceilings, split into 2 story, multiple living spaces, private enclosed back garden and covered entertaining space, versatile home office/studio at the rear, perfect for many uses.

- Sleek galley kitchen with integrated fridge/ freezer, gas cooking and plentiful storage
- Light filled and elegant formal living with decorative fireplace and solid timber floors
- Open living and dining space with built in cupboards along the picturesque windows drawing natural light
- Three bedrooms upstairs, two with built-in robes
- Two stylish bathrooms, one on each floor including a bath downstairs
- Versatile studio ideal for home office/guest bedroom/rumpus room/home gym/art studio
- Outdoor covered entertaining space, laundry with washer & dryer provided

Deposit paid & open inspection

cancelled**Contact:**

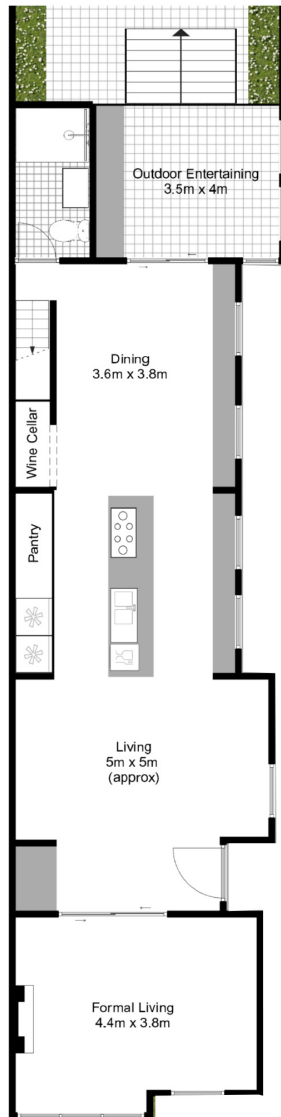
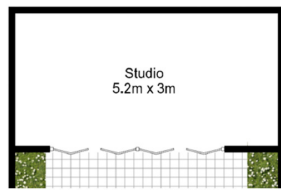
Saiyida Aierken

0451 488 998

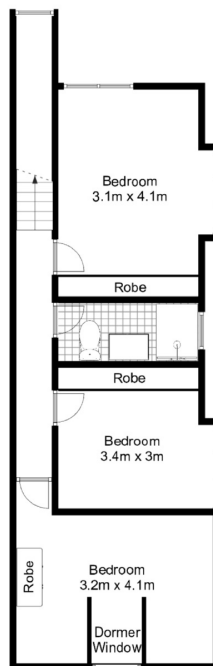
Cyndia Sun

0435 872 554

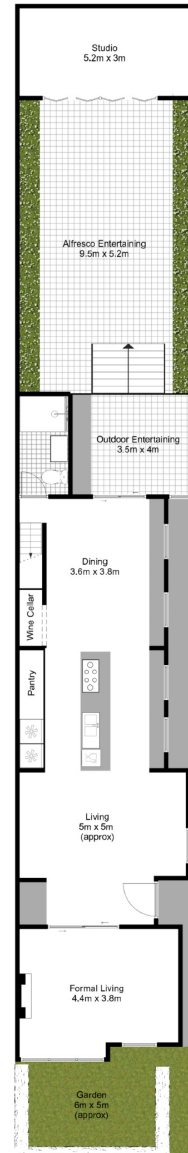
Type: House**Date Available:** 24/07/2023**Leased Date:** 11/08/2023**Bond:** \$7200



GROUND FLOOR



FIRST FLOOR



SITE PLAN



UTHER + SUN PROPERTY

Adore your home

20 Gouldsbury Street, Mosman

Floorplan shown is for presentation purposes and is not part of any legal document or title.
All measurements and figures are approximate. Interested parties should make their own enquiries.

Plans shown are only indicative of layout. Dimensions are approximate.

MOSMAN, NSW
20 Gouldsbury Street