



2/1A Superba Parade MOSMAN, NSW



2



1



1

Tranquil Balmoral Slopes Location

A picturesque harbour outlook, exclusive Balmoral slopes position and a prized cul de sac setting make this property a standout. Featuring a sun splashed NE aspect and leafy treetop serenity, the exceptional location between the beach and Mosman Village creates an enviable and easy lifestyle.

- Expansive balcony and living wrapped in glass maximising views and light
- Renovated eat-in gas kitchen with laundry nook, windows on three sides
- 2 double beds with robes, fresh white bathroom includes underfloor heating
- Lock up garage, easy street parking, lovely boutique setting of just 6
- 550m to Balmoral Beach, 650m to Village cafes, restaurants, shops, bus
- Sorry no Pets

UNFURNISHED (12 months lease preferred)

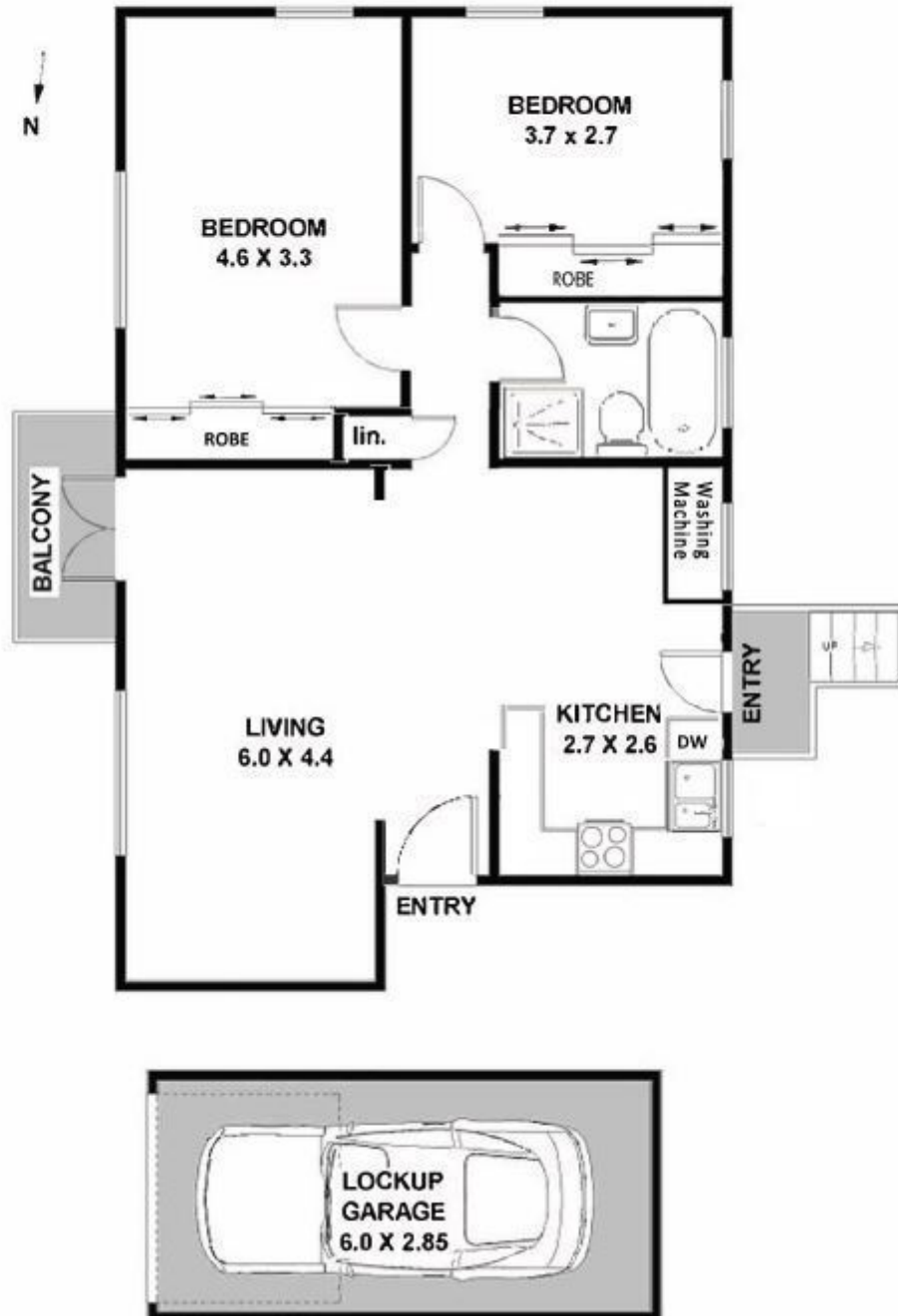
APPLY ONLINE by entering this link into your browser: <https://t-app.com.au/us>

Deposit paid

Contact: Saiyida Aierken
0451 488 998
Dee Uther
0427 689 139

Type: Apartment
Date Available: 21/04/2023
Leased Date: 24/04/2023
Bond: \$3600

2 / 1A Superba Parade, Mosman



Plans shown are only indicative of layout. Dimensions are approximate.

MOSMAN, NSW
2/1A Superba Parade