

15/16 Bardwell Road MOSMAN, NSW



2



2



1

Cosmopolitan Convenience and Spacious Dual Level Living

Access through 2 Lang St or 16 Bardwell Road

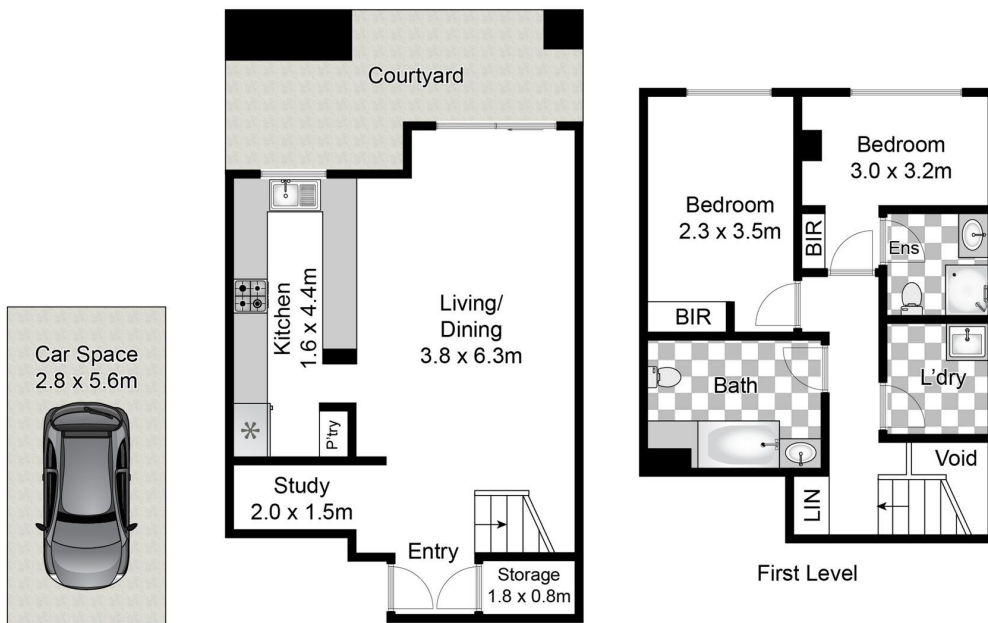
A level stroll to Mosman Village and Bridgepoint Shopping Centre, this ground floor townhouse style apartment displays renovated interiors enhanced by a dual level layout. Serene yet central, the location offers incomparable convenience moments to cosmopolitan cafes, restaurants, bars and shops in both Mosman and Cremorne. Travel with ease into the city centre or beaches with buses on the doorstep.

- Modern living and dining open to a courtyard ideal for outdoor entertaining
- Chic renovated kitchen with breakfast bar, new flooring, carpet and paint
- Double bedrooms with built-ins, two bathrooms and a laundry set upstairs
- 112sqm approx. on title, study alcove, security parking, secure intercom entry
- Well maintained low rise 'Winchester' complex with lovely common gardens
- Level 500m walk to Mosman, 750m to Cremorne and the Orpheum cinema
- Moments to quality schools, supermarkets and an array of handy amenities

Auction - Contact agent

Contact: Cyndia Sun
0435 872 554
Dee Uther
0427 689 139

Type: Apartment
Sold Date: 18/03/2023



Basement

Ground Level

First Level

Outgoing:
 Water \$160.18 pq Approx
 Council \$392.00 pq Approx
 Strata \$1,228.15 pq Approx



Whilst bwrn.com.au has made every attempt to ensure the accuracy of the floor plan contained here, measurements are approximate and no responsibility is taken for any error, omission, or mis-statement. This plan is for illustrative purposes only.

15/16 Bardwell Road

Mosman

Plans shown are only indicative of layout. Dimensions are approximate.

MOSMAN, NSW
15/16 Bardwell Road