



211 Midson Road EPPING, NSW



5



3



2

Large family home

Positioned a short stroll to Epping West Public, with 19.819m frontage and an immense 1,026sqm in a desirably central location. Highly convenient, it is in the Cheltenham Girls and Epping Boys High School catchments and is steps to M2 buses.

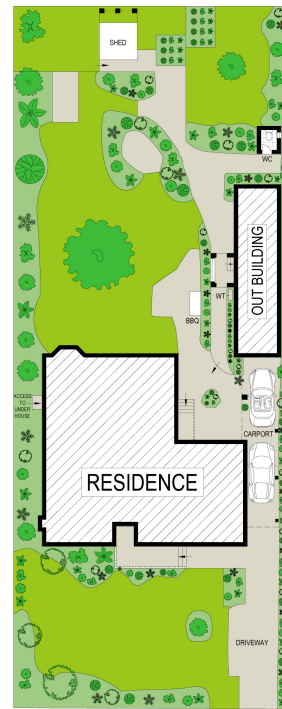
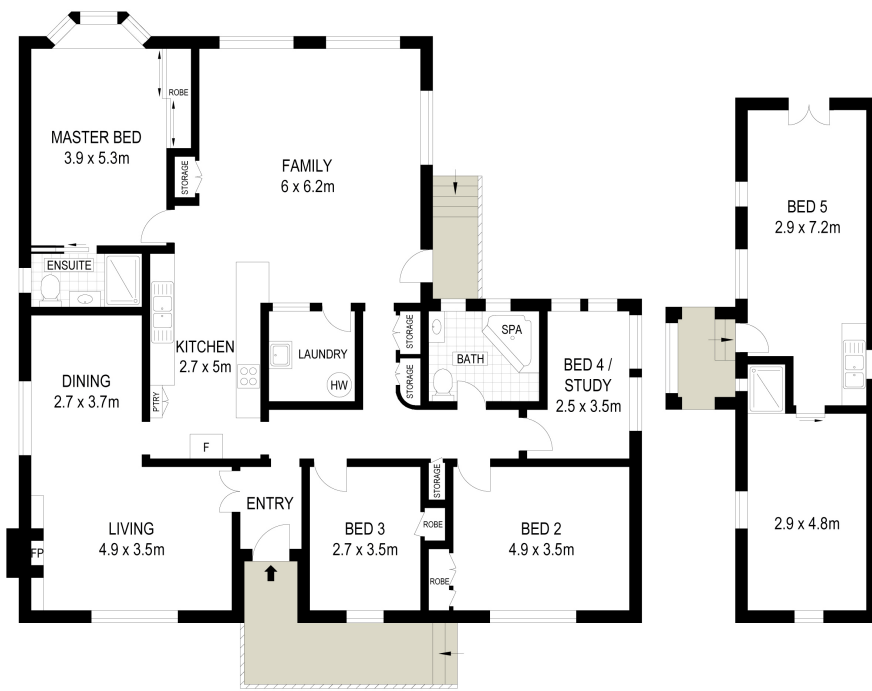
- Spacious family room with picture windows for garden views
- Classic L-shaped living and dining room with decorative fireplace
- Flourishing established gardens and deep yard
- Dedicated self-contained separate flat with kitchen and lounge
- Spacious timber kitchen with gas cooking and breakfast bar
- Charming bedrooms, three built-in robes and picture rails
- Main bedroom with ensuite plus a bathroom with corner bath
- High ceilings, air conditioning and gas bayonets
- Timber floors, Internal laundry, Double carport
- Footsteps to Ray Road buses, easy access to school, station, shops
- Pets considered on application

Unfurnished (12 months lease preferred) and available NOW

Deposit paid

Contact: Saiyida Aierken
0451 488 998
Steph Watmore
0416 556 064

Type: House
Date Available: 10/10/2022
Leased Date: 10/11/2021
Land: 1026m2
Bond: \$3200



SITE PLAN (NOT TO SCALE)



Scale in metres. Indicative only. Dimensions are approximate. All information contained herein is gathered from sources we believe to be reliable. However we cannot guarantee its accuracy and interested persons should rely on their own enquiries.

211 Midson Road, Epping

Plans shown are only indicative of layout. Dimensions are approximate.

EPPING, NSW
211 Midson Road