



5603/500 Pacific Highway ST LEONARDS, NSW



2



2



1

## Luxury Living on the 41st Floor of "The Landmark"

Brand new and offering the next level of luxury with high end finishes throughout, this 41st floor 2 bedroom apartment is filled with natural north facing light and views as far as the eye can see. In addition to an oversized floor plan, this apartment comes with access to Sky Lounge. Features include:

- Gourmet Kitchen, Gas cooking, Miele Appliances
- 2 full sized bedrooms with robes
- 2 bathrooms, internal laundry
- Separate living and dining opening onto expansive balcony
- Ducted A/C throughout
- Security Parking and storage

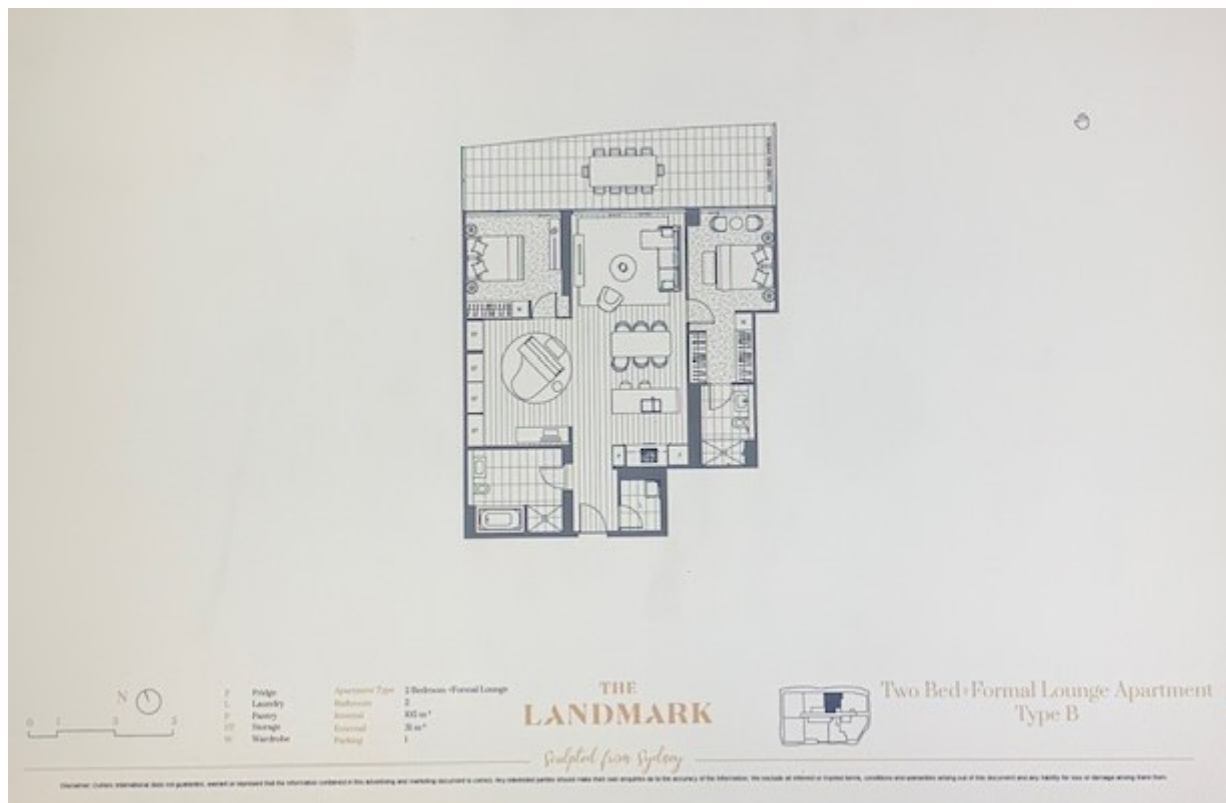
### Facilities Include:

- Sky Lounge Access
- Lap pool
- Virtual Golf Range with 3 tournament virtual systems, equipped with lounge setting and bar fridge.

## Deposit paid

**Contact:** Saiyida Aierken  
0451 488 998  
Steph Watmore  
0416 556 064

**Type:** Apartment  
**Date Available:** 25/06/2022  
**Leased Date:** 06/07/2022  
**Bond:** \$6000



Plans shown are only indicative of layout. Dimensions are approximate.

**ST LEONARDS, NSW**  
**5603/500 Pacific Highway**