



6/57 Grasmere Road CREMORNE, NSW



2



1



1

North facing urban hideaway in a superb location

*** Application & Deposit received***

In a vibrant lifestyle-rich pocket with village amenities convenient by foot, this second floor 'Burnham Court' apartment offers a fresh sense of style and contemporary in a perfectly maintained boutique security complex of only 15, complete with a peaceful position and elevated aspect that's destined to entice. Generously proportioned with updates throughout, its interiors are tastefully schemed with earthy timber floors and neutral tones that offer every style desired.

Ensuring urban proximity without the hustle, the apartment delights in a quiet tree-lined setting on the cusp of suburban recreation and with a wealth of lively local treasures at hand.

Enjoy a pleasant leafy stroll to Cammeray Golf Club, Primrose Park and popular Neutral Bay eateries, along with easy access to Cremorne Junction and Hayden Orpheum Theatre.

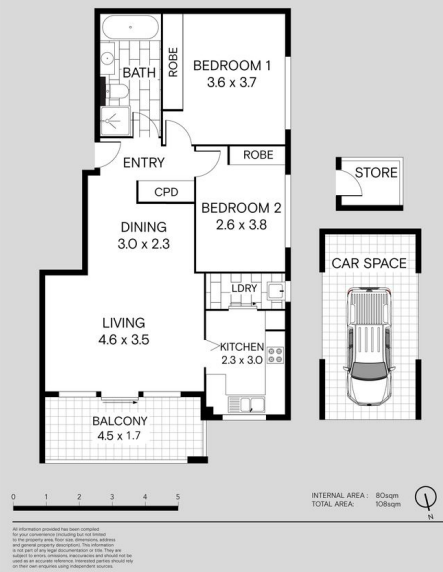
Features:

- Immediately warm and welcoming with an open sense of light and space

Deposit received

Contact: Cyndia Sun
0435 872 554
Saiyida Aierken
0451 488 998
Type: Apartment
Date Available: 21/08/2021
Leased Date: 13/05/2020
Bond: \$2600

6/57-59 GRASMERE ROAD
CREMORNE



Plans shown are only indicative of layout. Dimensions are approximate.

CREMORNE, NSW
6/57 Grasmere Road