



7/4 Lamont Street WOLLSTONECRAFT, NSW



Cosmopolitan Convenience with a Scenic Outlook

*** Application & Deposit received***

Occupying a peaceful rear of block position featuring scenic district views and water glimpses, this elevated two bedroom apartment presents absolute convenience. Highlights include the functional floorplan, covered balcony, level street entry and complex swimming pool. Superbly located 500m from the heart of Crows Nest and a host of cosmopolitan amenities including train and bus transport, retail and entertainment destinations, enjoy low maintenance ease with everything at your fingertips.

- Flowing open plan living and dining open outdoors
- Long covered balcony with lovely elevated outlook
- Neat & Tidy kitchen, internal laundry, security intercom
- Stunning Northerly aspect, light and bright interiors
- Two bright double bedrooms fitted with built-in robes
- Tiled bathroom includes large bath tub and shower
- Single carspace, level lift access, residents' pool

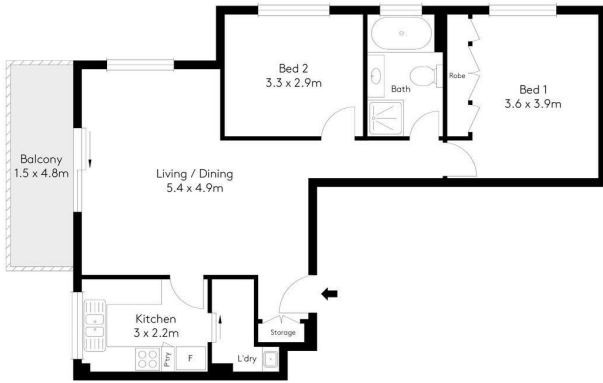
Deposit received

Contact: Saiyida Aierken
0451 488 998
Cyndia Sun
0435 872 554

Type: Apartment
Date Available: 18/06/2022
Leased Date: 17/06/2022
Bond: \$2380



Basement



Entry Level



At the information provided has been collected from reliable sources but cannot be guaranteed for accuracy. Interested persons should rely on their own enquiries. All dimensions are approximate and indicative only.

7/4 LAMONT STREET, WOLLSTONECRAFT



Plans shown are only indicative of layout. Dimensions are approximate.

WOLLSTONECRAFT, NSW 7/4 Lamont Street