



203/17 Grosvenor Street CROYDON, NSW



2



2



1

*** Application and holding deposit received***

Situated on the second floor of the Chelsea Croydon development, this elegant and modern two bedroom + study apartment offers a modern apartment living and city convenience. Short stroll to train, local amenities, parks, playgrounds and respected schools.

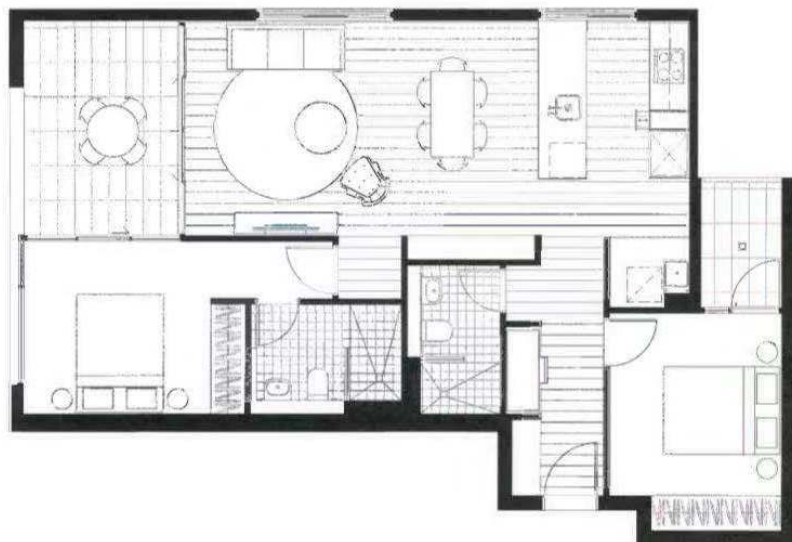
- Open gas kitchen offers quality appliances and stone bench
- Well-proportioned open living space, fully covered balcony with gas point
- Generous sized bedrooms with built-ins and balconies, main with ensuite
- Modern bathrooms
- Study area
- Timber floors in living area and carpet in bedrooms
- Internal laundry with dryer provided
- Ducted air conditioning, security building, lift access
- Secure car space
- Steps to sought-after public and private Schools including Croydon Public and Presbyterian Ladies College

Unfurnished (12 months lease preferred) and Available from 6 November

Application & deposit received

Contact: Cyndia Sun
0435 872 554
Steph Watmore
0416 556 064

Type: Apartment
Date Available: 06/11/2020
Leased Date: 27/10/2020
Bond: \$2480



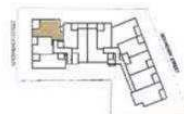
Disclaimer: The software is not sold as a general outline for the guidance of intending purchasers and do not constitute an offer or contract. All dimensions, dimensions, references to fixtures and necessary details relevant for use and other details are given in good faith and are believed to be correct, but any intending purchaser should not rely on them as statements or representations of fact, but must verify the contents by inspection or reference to the conditions of each lot, and where necessary seek advice. The total party supplier or their agent has no authority to make or give any representations or warranty in relation to this property.

CHELSEA

CROYDON

APTS
1.03, 2.03, 3.03, 5.03,
6.03, 7.03, 8.03
LEVEL 1-8
 2 BEDROOM + MEDIA

INTERNAL	80m ²
EXTERNAL	13m ²
TOTAL	93m ²



chelseacroydon.com.au
 1800 662 590

Lotus
 Property Group

CBRE

Plans shown are only indicative of layout. Dimensions are approximate.

CROYDON, NSW
203/17 Grosvenor Street