



MOSMAN, NSW



6



6



4

### \*\*\*Application & Deposit received\*\*\*

Elevated above the sparkling waters of Chinamans Beach, this exclusive residence showcases world class living combined with sprawling outlooks across Rosherville Reserve and Middle Harbour. The home, unparalleled in quality, is impeccably enhanced by a clever design and endless natural light.

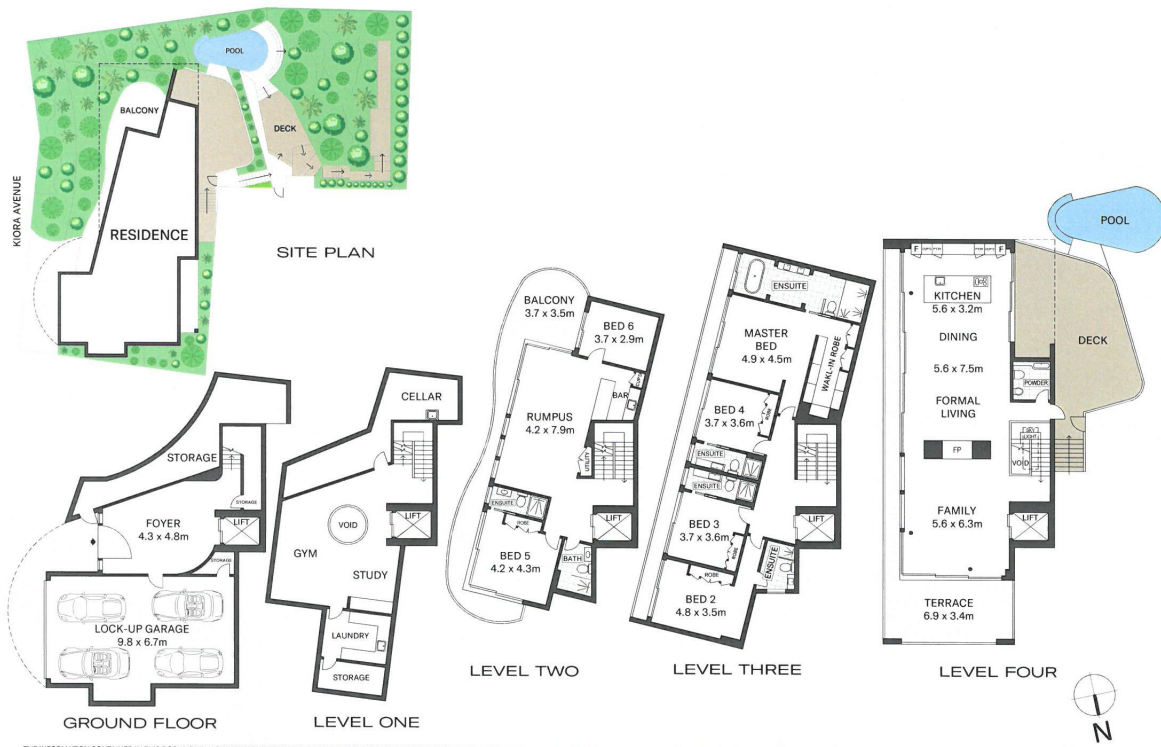
It reveals a vast selection of luxurious living/entertaining spaces, which transition to an array of sun washed terraces. Complete with a heated swimming pool and garage for up to four cars, the elite property is a landmark family haven and it enjoys near direct access to the park and the beach.

- High-end list of finishes throughout
- Lift access across every floor, mezzanine level with study nook and gym
- Living presides over the top floor showcasing sprawling lateral dimensions and wrapped in glass with views over Chinaman's Beach
- Wraparound balconies and superb alfresco terrace, rear terrace with built-in barbeque
- Completely high-end thick marble topped island kitchen, comprehensive array of Miele appliances

### Application & deposit received

**Contact:** Cyndia Sun  
0435 872 554  
Steph Watmore  
0416 556 064

**Type:** House  
**Date Available:** 15/12/2020



20 Kiara Avenue, Mosman

Plans shown are only indicative of layout. Dimensions are approximate.

**MOSMAN, NSW**