



211 Midson Road EPPING, NSW



5



3



2

## Large family home

\*\*\*Application and deposit received\*\*\*

Positioned a short stroll to Epping West Public, with 19.819m frontage and an immense 1,026sqm in a desirably central location. Highly convenient, it is in the Cheltenham Girls and Epping Boys High School catchments and is steps to M2 buses.

- New timber flooring and blinds
- Spacious family room with picture windows for garden views
- Classic L-shaped living and dining room with gas fireplace
- Flourishing established gardens and deep yard with wood shed
- Dedicated self-contained separate flat with kitchen and lounge
- Spacious timber kitchen with gas cooking and breakfast bar
- Charming bedrooms, three built-in robes and picture rails
- Main bedroom with ensuite plus a bathroom with corner bath
- High ceilings, air conditioning and gas bayonets
- Double carport, ample storage
- Footsteps to Ray Road buses, easy access to school, station, shops

**\$700.00 pw**

**Contact:**

Cyndia Sun  
0435 872 554  
Dee Uther  
0427 689 139

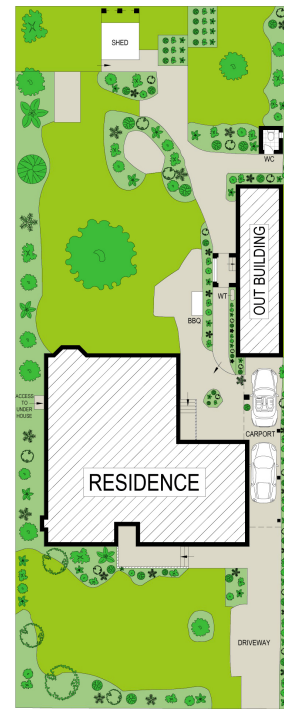
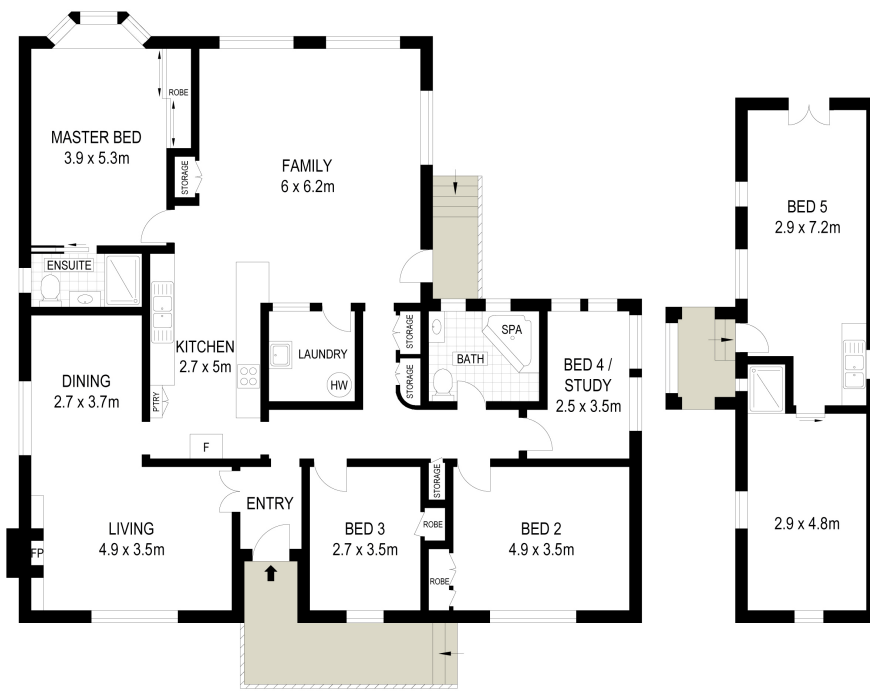
**Type:** House

**Date Available:** 30/04/2020

**Leased Date:** 11/05/2020

**Land:** 1026m<sup>2</sup>

**Bond:** \$2800



SITE PLAN (NOT TO SCALE)

0 1 2 3 4 5

Scale in metres. Indicative only. Dimensions are approximate. All information contained herein is gathered from sources we believe to be reliable. However we cannot guarantee its accuracy and interested persons should rely on their own enquiries.

211 Midson Road, Epping



Plans shown are only indicative of layout. Dimensions are approximate.

**EPPING, NSW**  
**211 Midson Road**